



# **KOTKA-HAMINA REGION**

Southeast Finland  **cursor**

Cursor Oy

Kotka-Hamina Regional Development Company

15.4.2021

# Kotka-Hamina Region



## Kotka-Hamina Region



### Kotka-Hamina region

6 municipalities  
95 000 inhabitants  
7 500 companies  
35 000 jobs

The location of the region at EU-Russian border offers interesting opportunities for any globally oriented business.



# Cursor



## Cursor Oy

Cursor Oy, Kotka-Hamina Regional Development Company, has a successful 30 years history in producing business and development services.

Cursor is owned by the region's five municipalities – Kotka, Hamina, Pyhtää, Virolahti and Miehikkälä – together with industrial enterprises and financial institutions in the region.

We make the Kotka-Hamina region a better place for business.

Our key task is to provide versatile support for successful and sustainable company growth and development.

Cursor takes an active role in the region's future development, by providing services both for start-ups and operating businesses.

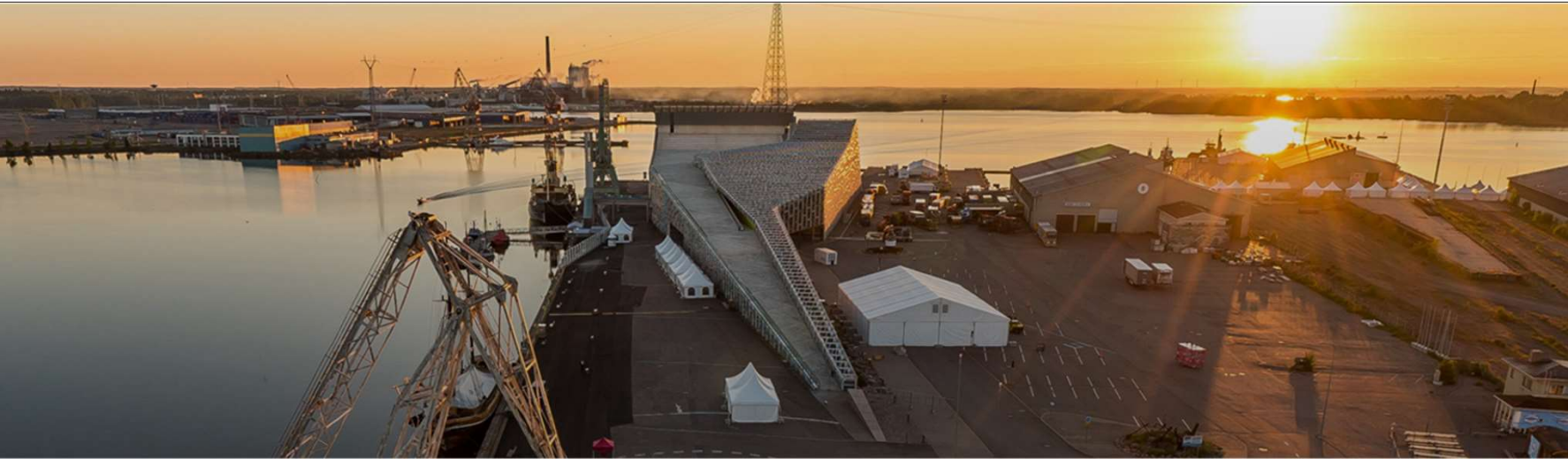
Through regional and international development projects, Cursor develops new business opportunities.



### KEY FIGURES

<i>Turnover</i>	8 m€
<i>Balance sheet</i>	30 m€
<i>Personnel</i>	48

## Cursor



## Cursor Oy

### Main responsibilities and tasks:

- to develop existing companies and start-ups
- to get investments in the region
- to support and develop tourism

## Top industries in our region / Industry



### A strong industrial tradition lives on

Wood, paper, paperboard, metal. These are the strong roots of the region. We have wrestled with structural change, and turned our eyes firmly towards the future with confidence.

#### Source of innovations

Companies in the Kotka-Hamina region have developed innovations with an environmental focus. An international and modern technology industry is growing and developing around the forest industry, and the metal and packaging industry is thriving.

### Room for businesses in the port, near the border and in industrial parks

There is room for businesses in Finland's largest general port, Port of HaminaKotka, on the Russian border at Vaalimaa, at the new and developing Helsinki-East Aerodrome, and in the traditional Karhula Industrial Park and other industrial parks.

### An environmental and dynamic journey towards new horizons

The region has an excellent and modern energy network, providing enough electricity, gas, steam and district heating for industrial needs. Large local energy companies – Kotka Energy and Hamina Energy – are developing the region's energy infrastructure, taking account of environmentally friendly and smart energy solutions of the future.



*We have plenty of good partners, planning expertise, energy, room for your business, and a workforce that knows what it's doing.*

# Current investments and developments in the region



## Google

€1,2 billion 2019 –in total €2mrd DC investment



## KotkaMills Oy

Continuous investments made for the production of plastic-free sustainable packaging materials



## Stora-Enso Oy

Sunila Lignin pilot factory for battery industry end users, running 2021



## Hamina LNG Oy

LNG terminal in Hamina, running 2021



## Fintoil Oy

Biorefinery to Hamina, running 2023



## Rauanheimo Oy

New logistic terminal at Mussalo port



## HaminaKotkaSatama Oy

New pulp terminal to Mussalo 2019 and on going investments to port rail tracks



## Andritz Oy

Production line planning and delivery for UPM Uruguay plant



## Our services for entrepreneurs interested in locating a business here



### Business premises and plots

We will help your company to find suitable operating premises and a plot



### Networking

We will help your company to network with other local businesses.



### Funding channels

We will present available funding opportunities and channels.



### Customer meetings locally

We can organise meetings with potential customers and stakeholders in the Kotka-Hamina region.



### Cooperation with educational institutions

We will put you in touch with local educational institutions should you need services such as tailored personnel training, domestic or international workforce or trainees, or if you are interested in RDI partnerships.



## Contacts

---



**Ilkka Hasanen**

Director, Invest in

Tel: +358 40 190 2515

E-Mail: [ilkka.hasanen@cursor.fi](mailto:ilkka.hasanen@cursor.fi)

(FIN, ENG)



**Toni Vanhala**

Senior Advisor, Invest in

Tel: +358 40 152 8802

E-Mail: [toni.vanhala@cursor.fi](mailto:toni.vanhala@cursor.fi)

(FIN, ENG, GER, SWE)

Cursor Oy  
Kymminlinnantie 6  
FI-48600 KOTKA, FINLAND  
Reception +358 40 190 2500  
[info@cursor.fi](mailto:info@cursor.fi)



# KOTKA-HAMINA REGION

Southeast Finland  cursor

For more information please visit:

[www.cursor.fi](http://www.cursor.fi)

[www.businesskotkahamina.fi](http://www.businesskotkahamina.fi)

[www.visitkotkahamina.fi](http://www.visitkotkahamina.fi)

